



# Contents

<b>Northern Territory wide statistics</b> .....	4
Key injury claims information .....	4
Injury claims by age and gender .....	4
Injury claims by all industries .....	4
Main industries by serious injury.....	5
Main occupations seriously injured.....	5
Main mechanisms of serious injury.....	5
Main injury groups for serious injuries.....	5
<b>Work-related fatalities</b> .....	6
Work-related fatalities by industry .....	6
Work-related fatalities by mechanism of injury .....	6
<b>Industry focus - Government Administration and Defence</b> .....	7
Key injury claims information .....	7
Injury claims by age and gender .....	7
Main occupations seriously injured.....	7
Main industry sub-groups by serious injury claims .....	8
<b>Main mechanisms of serious injury</b> .....	8
Break down by main mechanisms of serious injury .....	8
Falls, trips and slips of a person.....	8
Body stressing.....	9
Mental stress .....	9
<b>Industry focus – Health and Community Services</b> .....	10
Key injury claims information .....	10
Injury claims by age and gender .....	10
Main occupations seriously injured.....	10
Main industry sub-groups by serious injury claims .....	11
Main mechanisms of serious injury.....	11
Break down by main mechanisms of serious injury .....	11
Being hit by moving objects.....	11
Body stressing.....	12
Mental stress .....	12
<b>Industry focus - Construction</b> .....	13
Key injury claims information .....	13

Injury claims by age and gender .....13

Main occupations seriously injured.....13

Main industry sub-groups by serious injury claims .....14

Main mechanisms of serious injury .....14

Break down by main mechanisms of serious injury .....14

    Being hit by moving objects.....14

    Body stressing.....15

    Falls, trips and slips of a person.....15

**Industry focus – Agriculture, forestry and fishing .....16**

    Key injury claims information .....16

    Injury claims by age and gender .....16

    Main occupations seriously injured.....16

    Main industry sub-groups by serious injury claims .....17

    Main mechanisms of serious injury .....17

    Break down by main mechanisms of serious injury .....17

        Being hit by moving objects.....17

        Falls, trips and slips of a person.....18

        Body stressing.....18

**Industry focus – Retail Trade .....19**

    Key injury claims information .....19

    Injury claims by age and gender .....19

    Main occupations seriously injured.....19

    Main industry sub-groups by serious injury claims .....20

    Main mechanisms of serious injury .....20

    Break down by main mechanisms of serious injury .....20

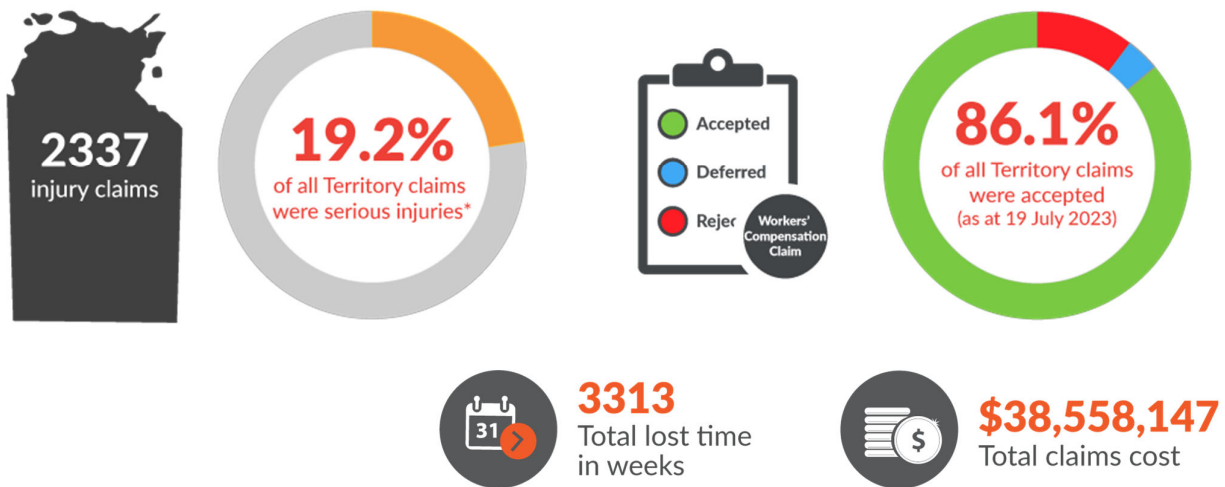
        Body stressing.....20

        Falls, trips and slips of a person.....21

        Being hit by moving objects.....21

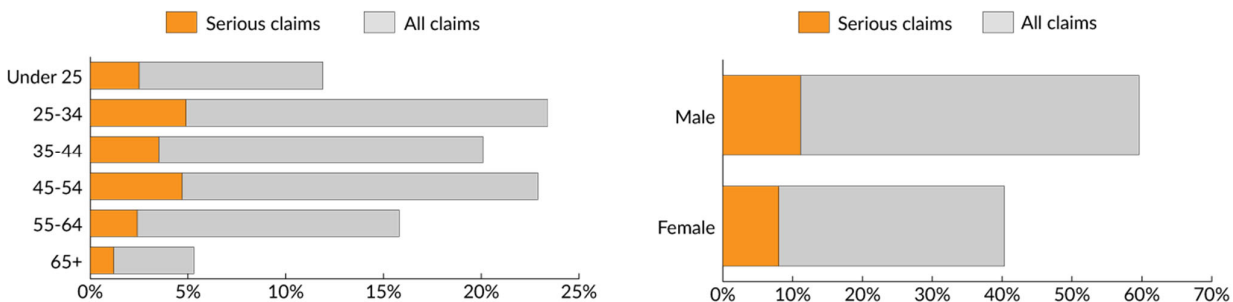
# Northern Territory wide statistics

## Key injury claims information

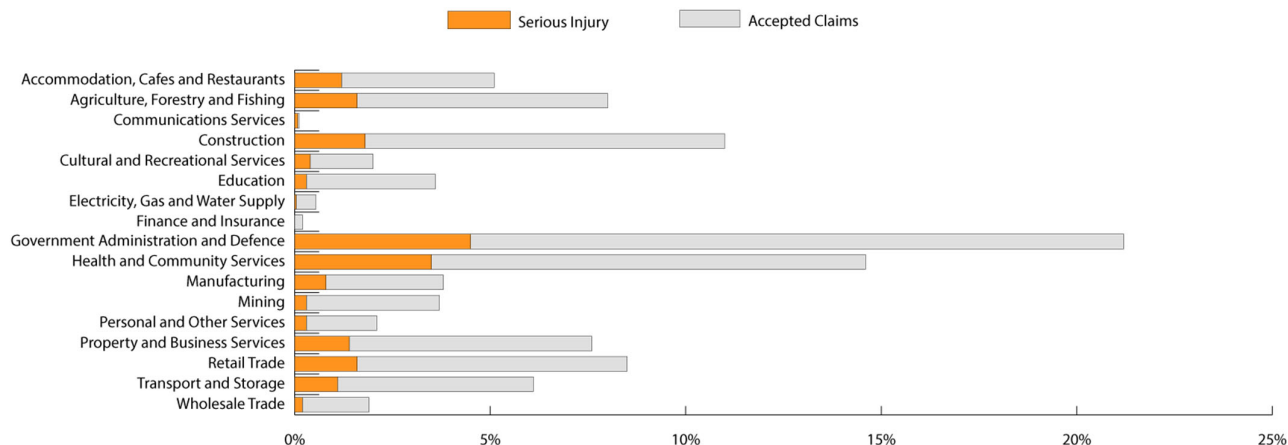


\* Claims where the worker needed at least one week of due to their injuries are considered serious injuries.

## Injury claims by age and gender



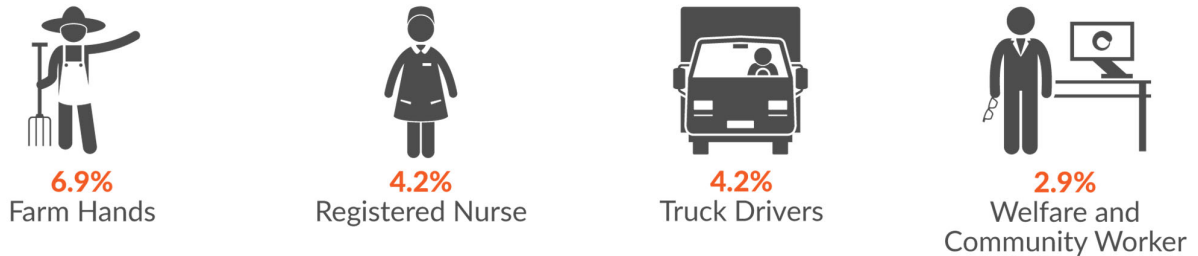
## Injury claims by all industries



## Main industries by serious injury



## Main occupations seriously injured



## Main mechanisms of serious injury



## Main injury groups for serious injuries



### Explanatory notes

Workers' Compensation Claims from 1 July 2022 to 30 June 2023. Preliminary data subject to revision in subsequent years as claims are finalised.

- Statistics are based on data gathered from workers compensation claims.
- Australian and New Zealand Standard Industrial classification (ANZSIC) 1993 used to identify industry sectors.
- Type of occurrence classification system (TOOCS) 3.1 used to identify mechanisms of injury.
- Australian Standard Classification of Occupations (ASCO) 2nd edition used to identify occupations.
- Claims where the worker needed at least one week off due to their injuries are considered serious injuries.

## Work-related fatalities



**5\***  
Work-related fatalities

- In 2022-23, there were 4 worker fatalities and 1 fatality classified as a bystander. A bystander is a person killed as a result of someone else’s work activity, while not engaged in a work activity of their own.
- The 2022-23 fatalities are currently under investigation. During the course of an investigation, a fatality may be determined as not work-related and the above figure will be adjusted accordingly during the next update.

\* Please note this figure only includes work-related fatalities investigated by NT WorkSafe. Some fatalities in the Northern Territory may fall in the jurisdiction of other national agencies.

### Work-related fatalities by industry



1

Agriculture, Forestry and Fishing



1

Manufacturing



1

Retail Trade



1

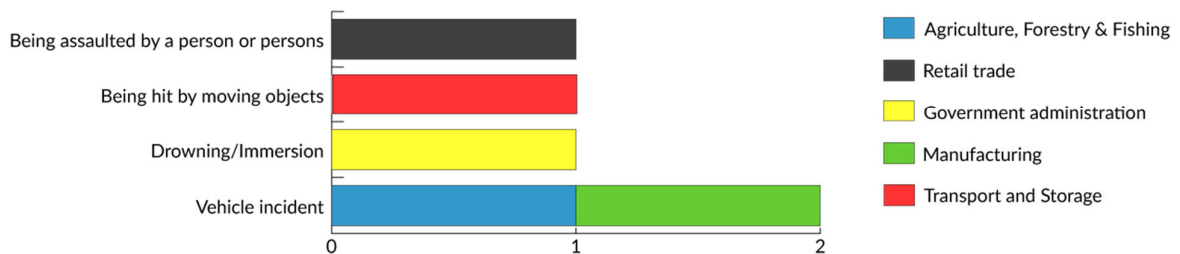
Government Administration



1

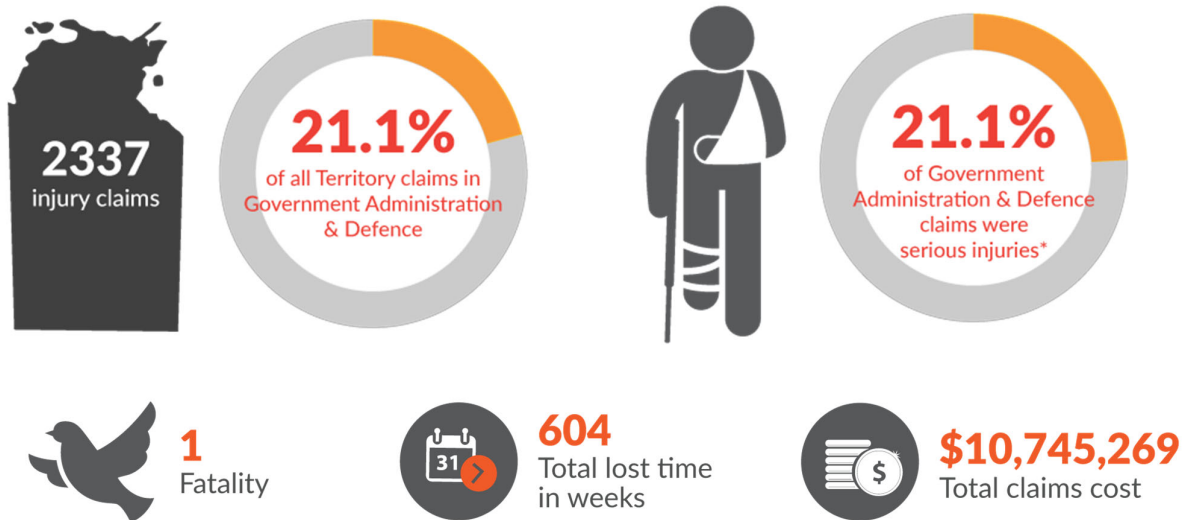
Transport and Storage

### Work-related fatalities by mechanism of injury



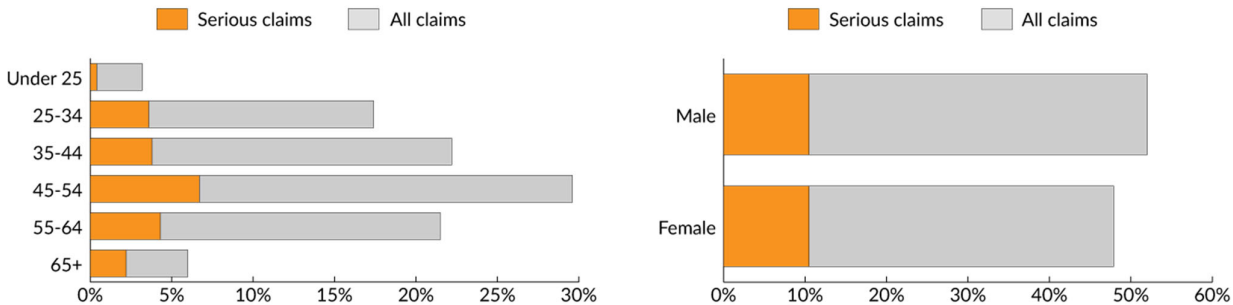
# Industry focus - Government Administration and Defence

## Key injury claims information



\* Claims where the worker needed at least one week of due to their injuries are considered serious injuries.

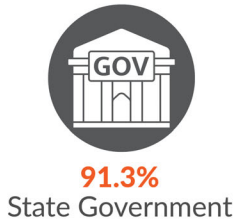
## Injury claims by age and gender



## Main occupations seriously injured



## Main industry sub-groups by serious injury claims



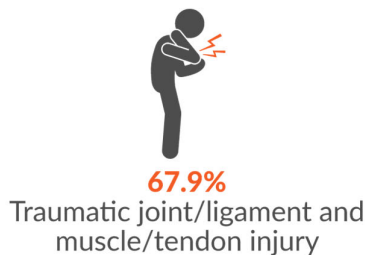
## Main mechanisms of serious injury



## Break down by main mechanisms of serious injury

### Falls, trips and slips of a person

The main two injury groups resulting from falls, trips and slips of a person were:

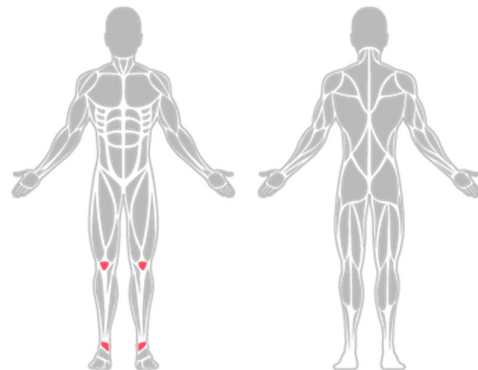


The two main incident types were:

- Falls on the same level (78.6%)
- Falls from a height (21.4%)

Main body areas injured were:

- Ankle (25.0%)
- Knee (14.3%)



## Body stressing

The main two injury groups resulting from body stressing were:



76.2%

Traumatic joint/ligament and muscle/tendon injury

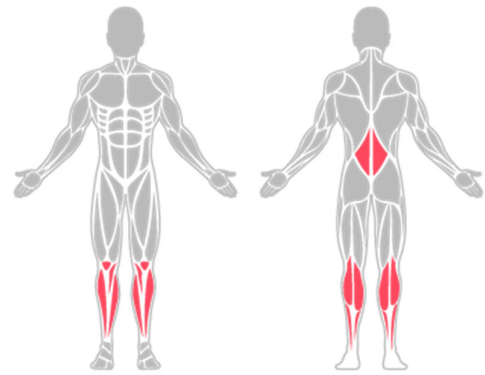


19.0%

Musculoskeletal and connective tissue injury

The three main incident types were:

- Muscular stress while lifting, carrying, or putting down objects (42.9%)
- Muscular stress while handling objects other than lifting, carrying or putting down (28.6%)
- Muscular stress with no objects being handled (23.8%)



Main body areas injured were:

- Lower back (47.6%)
- Lower leg (23.8%)
- Knee (14.3%)

## Mental stress

The main two injury groups resulting from mental stress were:



42.9%

Anxiety/Stress Disorder

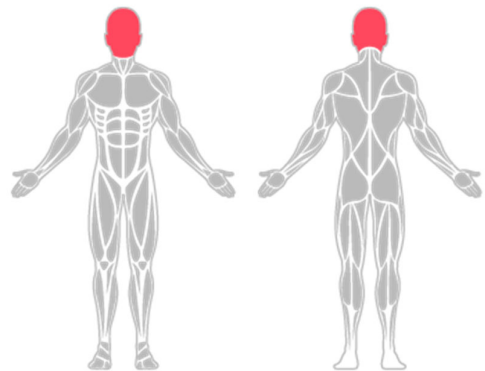


33.3%

Anxiety/Depression Combined

The three main incident types were:

- Work related harassment and/or workplace bullying (38.1%)
- Work pressure (28.6%)
- Exposure to a traumatic event (19.0%)



The main body area injured was:

- Psychological system in general (100%)

# Industry focus – Health and Community Services

## Key injury claims information



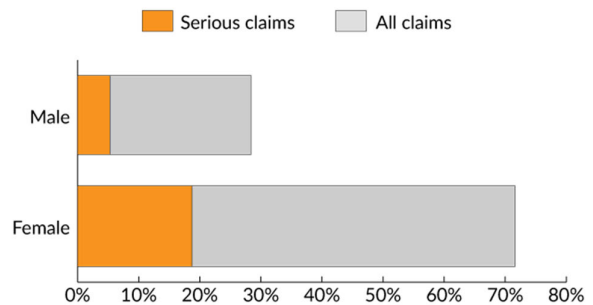
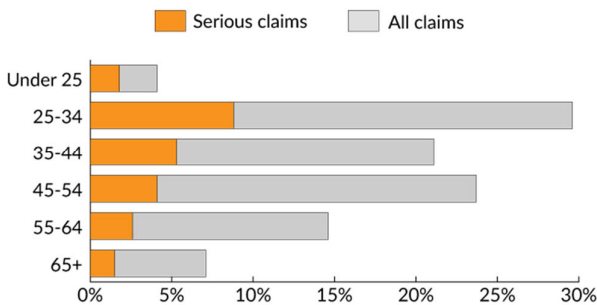
**669**  
Total lost time  
in weeks



**\$4,867,069**  
Total claims cost

\* Claims where the worker needed at least one week of due to their injuries are considered serious injuries.

## Injury claims by age and gender



## Main occupations seriously injured



**20.7%**  
Registered Nurse



**13.4%**  
Personal Care and  
Nursing Assistants



**11.0%**  
Welfare and  
Community Worker

## Main industry sub-groups by serious injury claims



42.7%

Hospitals (except Psychiatric Hospitals)



13.4%

Non-residential Care Services NEC



9.8%

Child Care Services

## Main mechanisms of serious injury



32.9%

Being hit by moving objects



29.3%

Body stressing



14.6%

Mental Stress

## Break down by main mechanisms of serious injury

### Being hit by moving objects

The three main injury groups resulting from being hit by moving objects were:



40.7%

Traumatic joint/ligament and muscle/tendon injury



29.6%

Wounds, lacerations, amputations and internal organ damage



22.2%

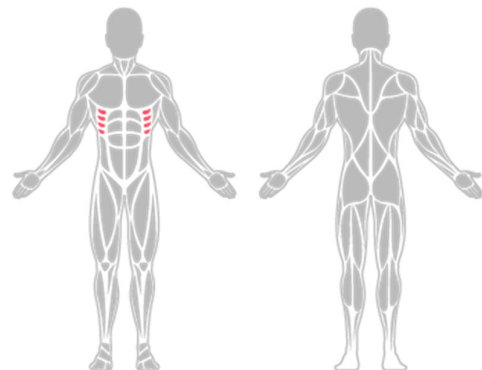
Fractures

The two main incident types were:

- Being assaulted by a person or persons (59.3%)
- Being hit by falling objects (11.1%)

Main body area injured was:

- Ribs (11.1%)



## Body stressing

The main two injury groups resulting from being body stressing were:



75.0%

Traumatic joint/ligament and muscle/tendon injury

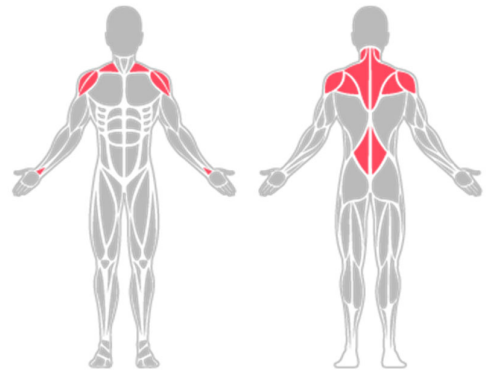


12.5%

Musculoskeletal and connective tissue injury

The three main incident types were:

- Muscular stress while lifting, carrying, or putting down objects (50.0%)
- Muscular stress while handling objects other than lifting, carrying or putting down (33.3%)
- Muscular stress with no objects being handled (16.7%)



Main body areas injured were:

- Lower back (54.2%)
- Shoulder (12.5)
- Wrist (12.5%)

## Mental stress

The main three injury groups resulting from mental stress were:



41.7%

Anxiety/Stress Disorder



25.0%

Reaction to Stressors  
(others, multiple or not specified)

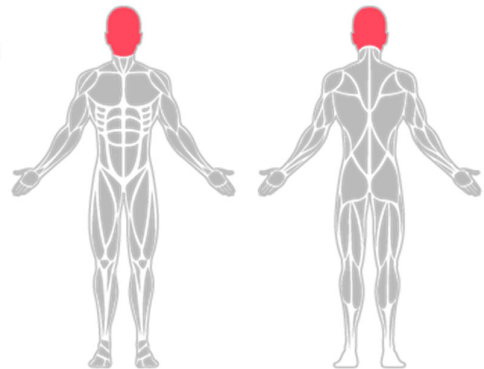


16.7%

Post-Traumatic  
Stress Disorder

The three main incident types were:

- Work related harassment and/or workplace bullying (50.0%)
- Exposure to workplace or occupational violence (33.3%)
- Work pressure (16.7%)

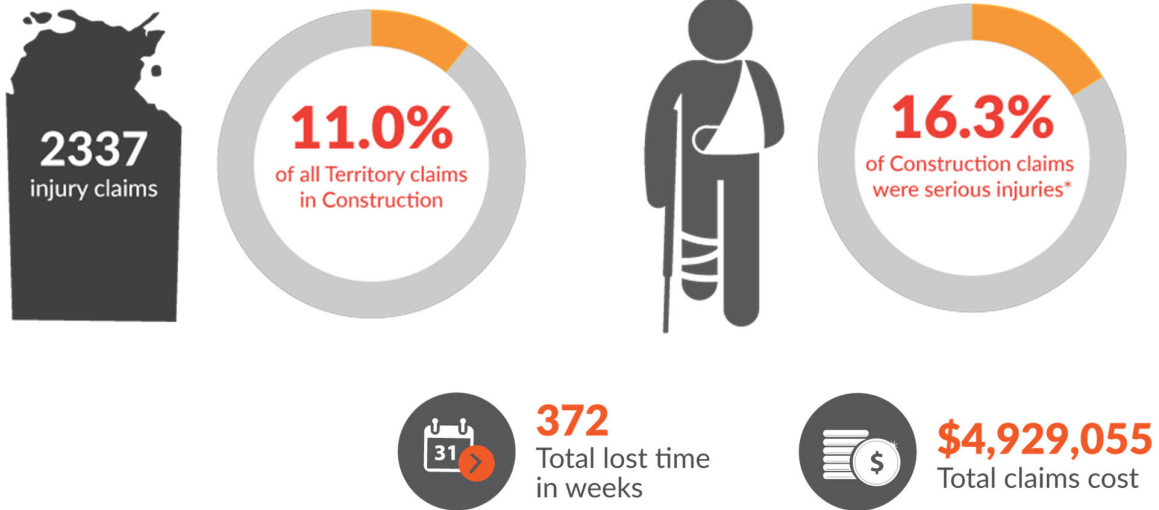


The main body area injured was:

- Psychological system in general (100%)

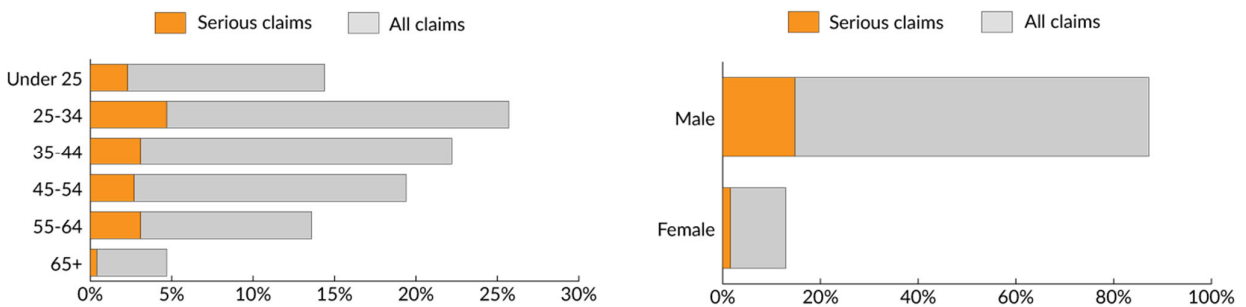
# Industry focus - Construction

## Key injury claims information



\* Claims where the worker needed at least one week of due to their injuries are considered serious injuries.

## Injury claims by age and gender



## Main occupations seriously injured



**11.9%**  
Plumbers



**9.5%**  
Other Miscellaneous Labourers and Related Workers



**9.5%**  
Structural Steel and Welding Tradespersons

## Main industry sub-groups by serious injury claims



**16.7%**  
Electrical Services



**14.3%**  
Non-residential  
Building Construction NEC



**11.9%**  
Construction Services NEC

## Main mechanisms of serious injury



**26.2%**  
Being hit by  
moving objects



**26.2%**  
Body stressing



**21.4%**  
Falls, trips and  
slips of a person

## Break down by main mechanisms of serious injury

### Being hit by moving objects

The main three injury groups resulting from being hit by moving objects were:



**54.4%**  
Wounds, lacerations, amputations  
and internal organ damage



**18.2%**  
Fractures



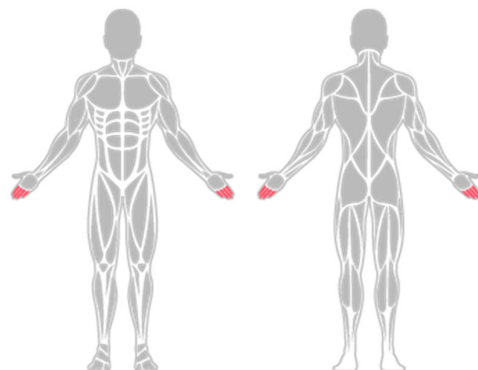
**18.2%**  
Traumatic joint/ligament and  
muscle/tendon injury

The three main incident types were:

- Being hit by falling object (45.5%)
- Being trapped between stationary and moving object (18.2%)
- Being hit by moving object (18.2%)

Main body area injured was:

- Fingers (45.5%)



## Body stressing

The two injury groups resulting from body stressing were:



**90.9%**

Traumatic joint/ligament and muscle/tendon injury

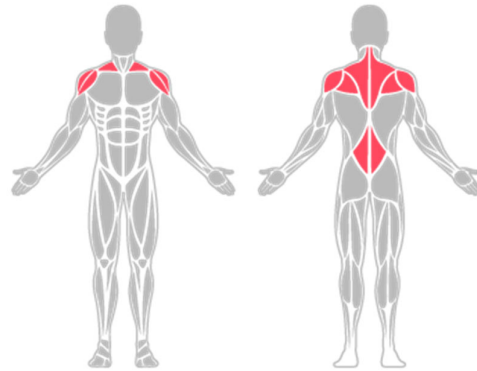


**9.1%**

Digestive system diseases (Hernias)

The two main incident types were:

- Muscular stress while lifting, carrying, or putting down objects (63.6%)
- Muscular stress while handling objects other than "lifting, carrying or putting down" (27.3%)



The main body areas injured were:

- Lower back (36.4%)
- Shoulder (18.2%)

## Falls, trips and slips of a person

The three main injury groups resulting from falls, trips and slips of a person were:



**33.3%**

Traumatic joint/ligament and muscle/tendon injury



**33.3%**

Fractures

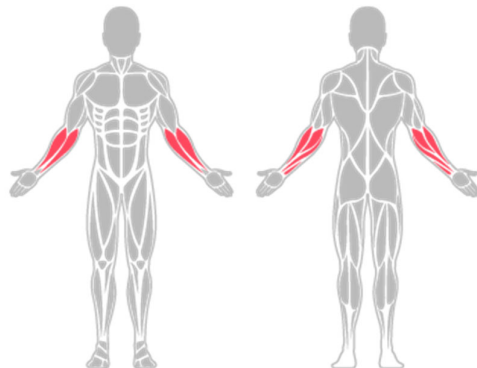


**22.2%**

Wounds, lacerations, amputations and internal organ damage

The three main incident types were:

- Falls from a height (44.4%)
- Falls on the same level (33.3%)
- Stepping, kneeling or sitting on objects (22.2)

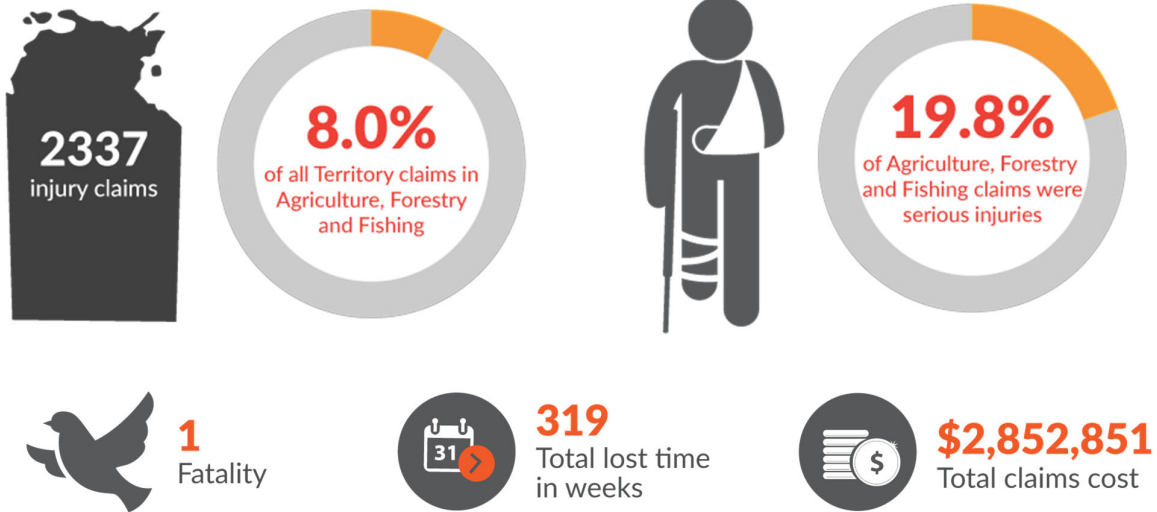


The main body area injured was:

- Forearm (22.2%)

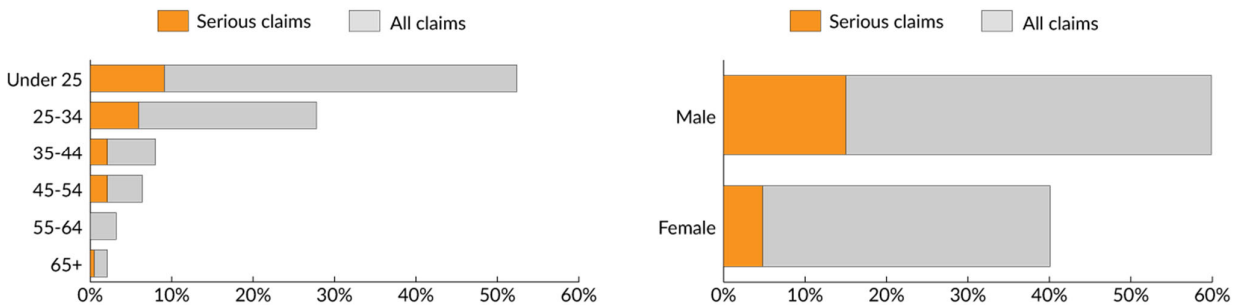
# Industry focus – Agriculture, forestry and fishing

## Key injury claims information

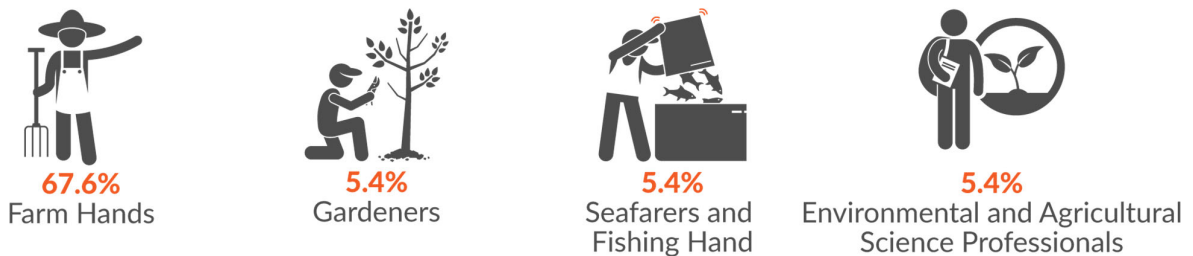


\* Claims where the worker needed at least one week of due to their injuries are considered serious injuries.

## Injury claims by age and gender



## Main occupations seriously injured



## Main industry sub-groups by serious injury claims



67.6%

Beef Cattle Farming



8.1%

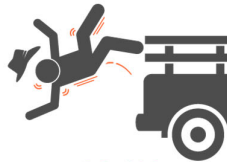
Services to Forestry

## Main mechanisms of serious injury



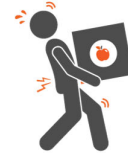
40.5%

Being hit by moving object



32.4%

Falls, trips and slips of a person



10.8%

Body stressing

## Break down by main mechanisms of serious injury

### Being hit by moving objects

The main three injury groups resulting from being hit by moving objects were:



46.7%

Wounds, lacerations, amputations and internal organ damage



33.3%

Traumatic joint/ligament and muscle/tendon injury



20.0%

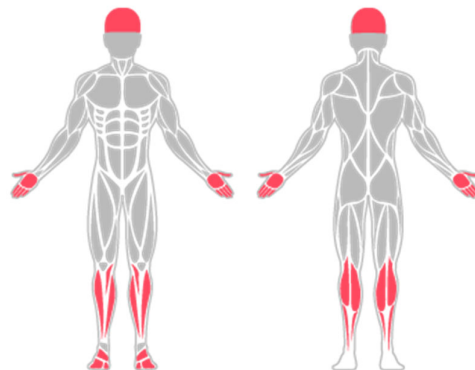
Fractures

The two main incident types were:

- Being hit by an animal (33.3%)
- Being hit by moving objects (20.0%)

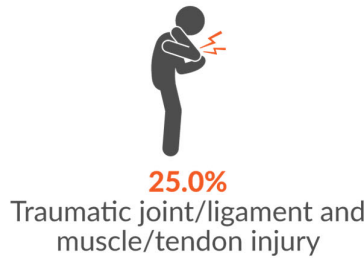
Main body areas injured were:

- Cranium (13.3%)
- Hand (13.3%)
- Lower leg (13.3%)
- Foot (13.3%)



## Falls, trips and slips of a person

The main three injury groups resulting from falls, trips and slips of a person were:

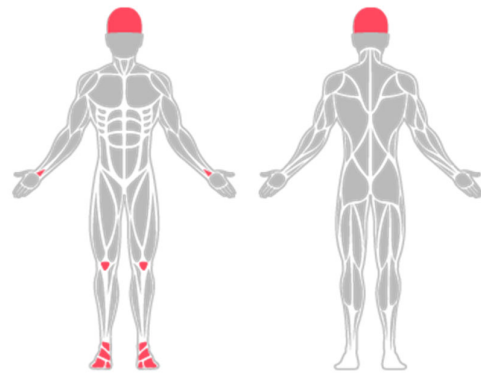


The two main incident types were:

- Falls from a height (58.3%)
- Stepping, kneeling or sitting on objects (25.0%)

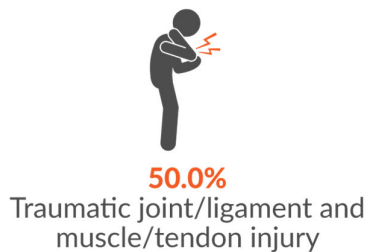
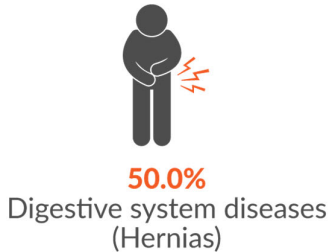
Main body areas injured were:

- Brain (16.7%)
- Wrist (16.7%)
- Knee (16.7%)
- Ankle (16.7%)
- Foot (16.7%)



## Body stressing

The main two injury groups resulting from body stressing were:

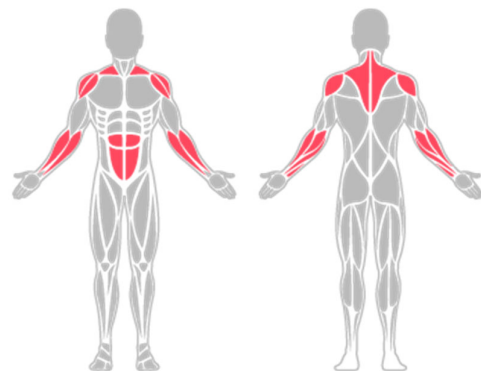


The main incident types were:

- Muscular stress while lifting, carrying or putting down objects (75.0%)
- Muscular stress while handling objects other than lifting, carrying (25.0%)

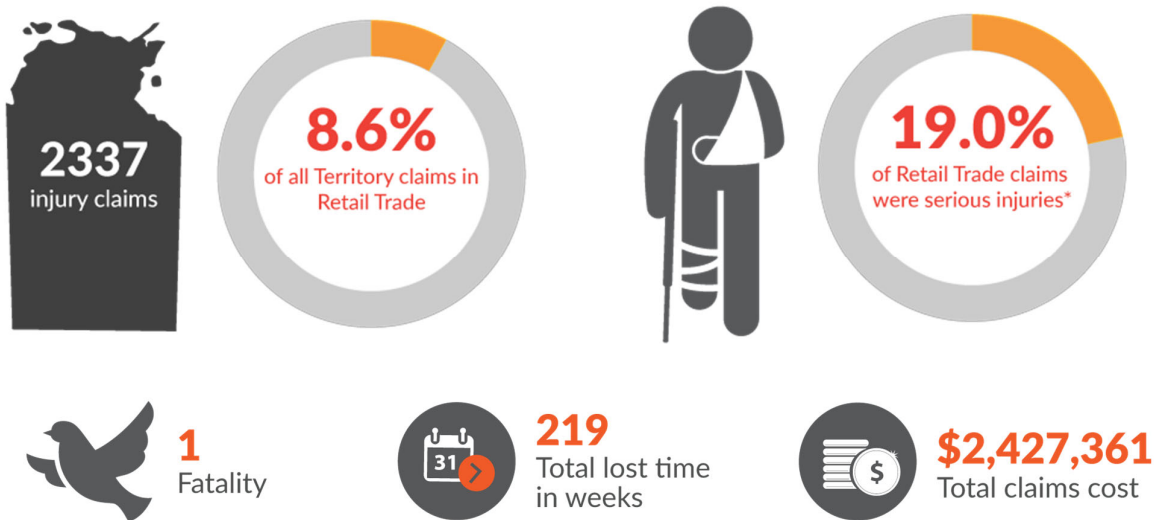
The main body areas injured were:

- Abdominal muscles and tendons (50.0%)
- Shoulder (25.0%)
- Forearm (25.0%)



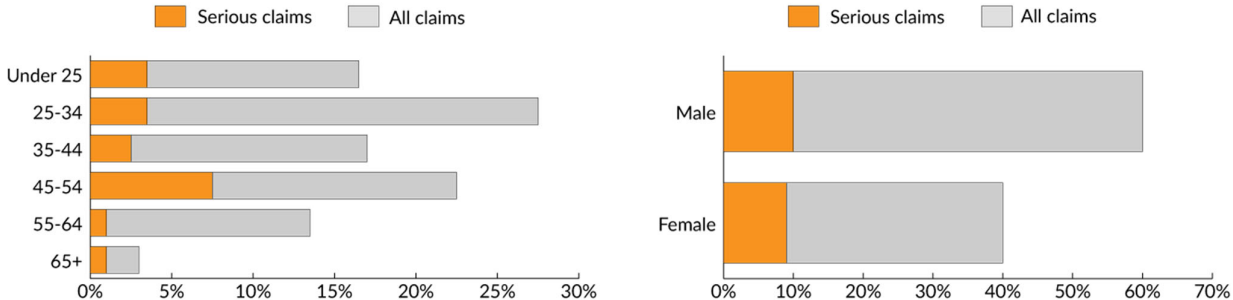
# Industry focus – Retail Trade

## Key injury claims information

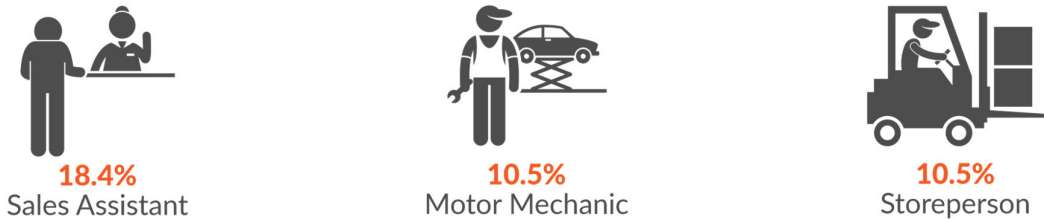


\* Claims where the worker needed at least one week of due to their injuries are considered serious injuries.

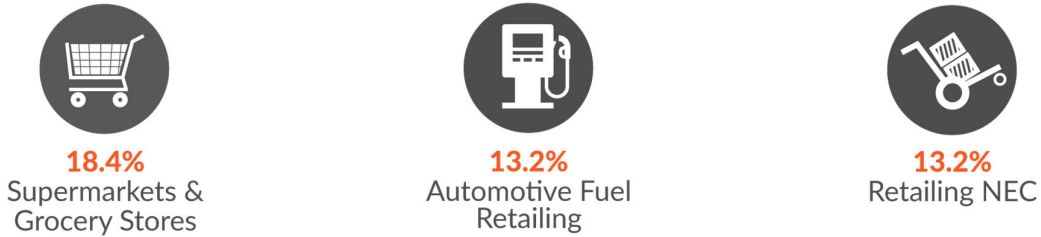
## Injury claims by age and gender



## Main occupations seriously injured



## Main industry sub-groups by serious injury claims



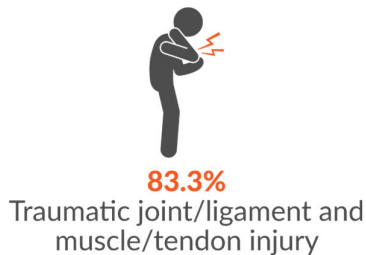
## Main mechanisms of serious injury



## Break down by main mechanisms of serious injury

### Body stressing

The main injury group resulting from body stressing was:

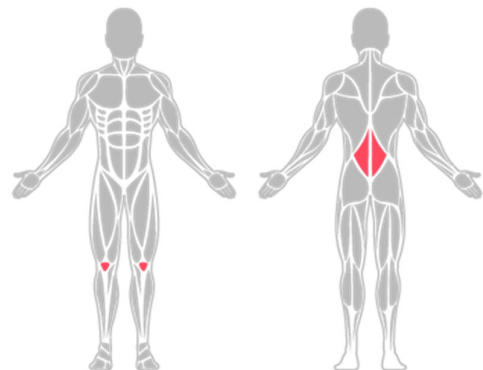


The three main incident types were:

- Muscular stress while lifting, carrying or putting down (50.0%)
- Muscular stress while handling objects other than lifting, carrying or putting down (33.3%)
- Muscular stress with no objects being handled (16.7%)

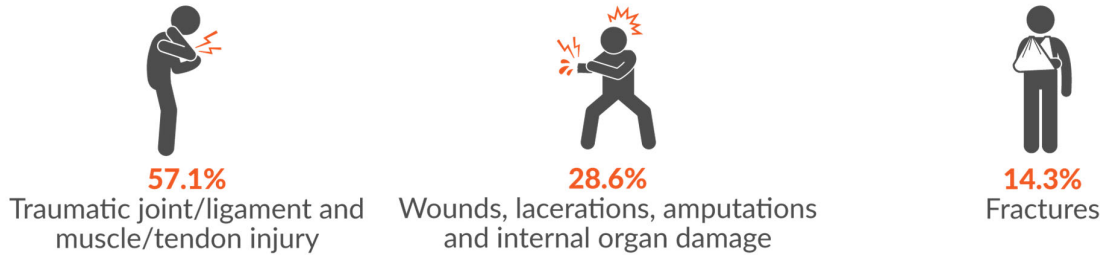
Main body areas injured were:

- Lower back (33.3%)
- Knee (25.0%)



## Falls, trips and slips of a person

The main three injury groups resulting from falls, trips and slips of a person were:

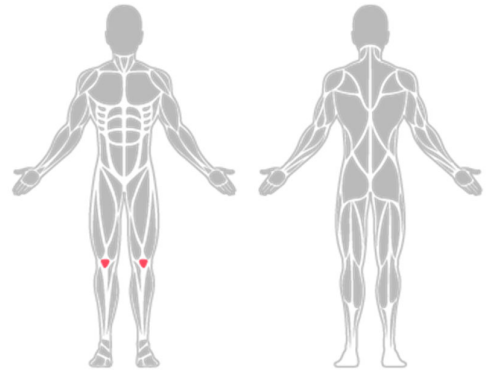


The two main incident types were:

- Falls on the same level (85.7%)
- Falls from a height (14.3%)

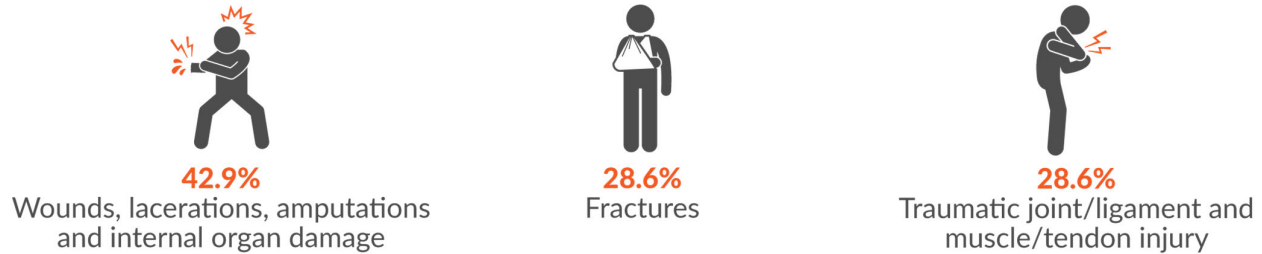
The main body area injured was:

- Knee (42.9%)



## Being hit by moving objects

The main three injury groups resulting from being hit by moving objects were:



The four main incident types were:

- Being hit by falling objects (42.9%)
- Being trapped between stationary and moving objects (28.6%)
- Being assaulted by a person or persons (14.3%)
- Being hit by moving objects (14.3%)

Main body area injured was:

- Fingers (28.6%)

